

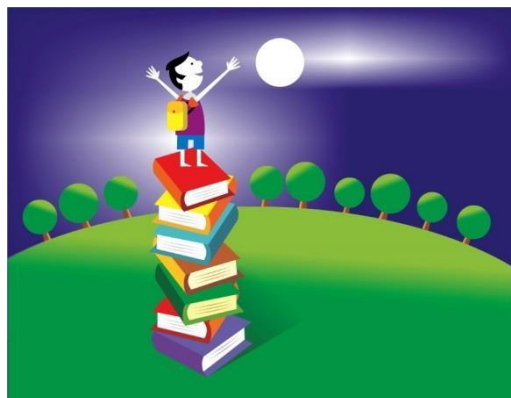


# St Augustine Webster Catholic Voluntary Academy.

## Inclusion Support

2017-18

Special needs Coordinator	Mrs B. Wynne
SEN Teacher	Mrs Hopkins
Learning Mentor	Mrs L. Vitello
Pastoral Mentor	Mrs Begum
Behaviour Mentor	Miss Driskell



## Inclusion Support.



- Support from school to help deal with any worries and concerns.



- Help to engage families with their child's learning and support the ethos and values of the school.



- Advice and information.



- Behaviour advice.



- Parenting support.




- Email contact and online support.




- Weekly drop in surgeries (Thursday)



**Worried  
about your  
child?**



**Need  
help?**



**Problems  
with your  
child?**



**Contact: The SEN Team  
by email**

**[sen.saw.northlincs@dbprimary.com](mailto:sen.saw.northlincs@dbprimary.com)**

**or on**

**01724 843722**

## Practical ideas to help at home.



- Reward charts
- Feelings diary
- Mood boards/ emotion cards
- Talk to child about his/her feelings
- Anger management sheets
- Time out / safe area
- Visual timetable/routines
- Maintain consistency and boundaries

All resources mentioned above are available from Mrs L. Vitello (Learning Mentor). Just contact her via the school office.

01724843722 or [sen.saw.northlincs@dbprimary.com](mailto:sen.saw.northlincs@dbprimary.com)

Other information about SEN issues can be found on the school website. [www.staugustinewebster.com](http://www.staugustinewebster.com)